

GTM
SPORTSWEAR

Powered by

Champion



PACKAGE 7+ ITEMS
15% OFF
SEE BACK COVER FOR DETAILS

TRACK
FALL 2017

1.877.255.2785

| service@gtmsportswear.com

| gtmtrack.com

FREE U.S. SHIPPING ON ORDERS OVER \$100



FIVE STAR CUSTOMER SERVICE & DECORATION CAPABILITIES



THE AUTHENTIC SPORTSWEAR BRAND



TWO POWERHOUSES,

UNITED FOR YOU.



For nearly 100 years, Champion has set the standard for team apparel, and now they're joining forces with GTM Sportswear, a customization company with over 28 years of experience.

Champion and GTM Sportswear are your one-stop shop for high-quality, custom team apparel. Expect the same five-star customer service that you've grown to love from the reps you've worked with from the start.

Make this season unforgettable with GTM Sportswear powered by Champion.

CONTENTS:

Warm-Ups	4
Training Gear	20
Fleece	40
Uniforms	48
Accessories	56
Bags	57
Art	60



NEW PRODUCT FROM



WARM-UPS

NEW **UF** Woven Jacket **\$75** PG 15
NEW **G** Venture Jogger **\$25** (Blank) PG 34



SPRINT PACKAGE:

BLANK ~~\$90~~ **\$85**

WITH ART SHOWN **\$119** Qty 12

A. **NEW** SPRINT 1/4 ZIP JACKET **\$40** (Blank) PG 7

B. Chill Fleece Headband **\$5** (Blank) PG 56

C. **NEW** SPRINT TRAINING PANT **\$40** (Blank) PG 7

D. Sport-Tek® Gloves **\$5** (Blank) PG 56



NEW SPRINT 1/4 ZIP WARM-UP **\$80** (Blank)

Jacket Colors: Team Navy/Slate Gray Heather, Athletic Royal/Slate Gray Heather, Black/Slate Gray Heather, Maroon/Slate Gray Heather, Scarlet/Slate Gray Heather, Team Dark Green/Slate Gray Heather, White/Slate Gray Heather

Pant Colors: Black, Slate Gray Heather

Jacket \$40: Adult 18106TU; Ladies' 18106TL

Pant \$40: Adult 18106BU; Ladies' 18106BL

Sizes: Adult S-3XL; Ladies' XS-2XL

- Body-90% Polyester, 10% Spandex
- 1/4 Zip With Storm Flap Top Of Collar
- Set-in Collar And Sleeve
- Imported

Upcharges: 2XL=\$2, 3XL=\$4



NEW ALL-STAR WARM-UP **\$115** (Blank)

Colors: Team Navy/Dark Platinum Gray, Athletic Royal/Dark Platinum Gray, Black, Dark Platinum Gray, Maroon/Dark Platinum Gray, Scarlet/Dark Platinum Gray

Jacket \$65: Men's 18107TU; Youth 18107TY

Pant \$50: Men's 18107BU; Youth 18107BY

Sizes: Men's S-3XL; Youth M-L

- Body-100% Polyester; Lining-100% Polyester; Pocket Lining-100% Polyester Taffeta; Knit Collar And Cuffs
- Knit Inner Sleeve Cuff
- Contrast Inserts
- Zippered Pockets
- Imported
- Packable Hood
- Slight Dropped Back Tail
- Wind Resistant And Water Resistant

Upcharges: 2XL=\$2, 3XL=\$4



NEW GO-TO TEAM WARM-UP **\$95** (Blank)

Jacket Colors: Team Dark Green/Dark Platinum Gray, Team Navy/Dark Platinum Gray, Athletic Royal/Dark Platinum Gray, Black/Dark Platinum Gray, Dark Platinum Gray, Maroon/Dark Platinum Gray, Scarlet/Dark Platinum Gray

Pant Colors: Team Navy/Dark Platinum Gray, Athletic Royal/Dark Platinum Gray, Black, Dark Platinum Gray, Scarlet/Dark Platinum Gray

Jacket \$50: Men's 18104TU; Ladies' 18104TL; Youth 18104TY

Pant \$45: Men's 18104BU; Ladies' 18104BL; Youth 18104BY

Jacket Sizes: Men's S-3XL; Ladies' XS-2XL; Youth M-L

Pant Sizes: Men's S-3XL; Ladies' XS-2X; Youth M-L

- 100% Polyester
- Imported
- Water Repellent Stretch Woven Fabric
- Media Friendly

Upcharges: 2XL=\$2, 3XL=\$4



INTRODUCING ACTIVEKNIT

Your team will love the modern matte finish and extra soft interior. It offers enhanced comfort and warmth without adding bulk.

Call 1.877.255.2785 to get your **FREE SAMPLE!**

NEW G ELITE WARM-UP \$60 (Blank)

Colors: Forest/Black/White, Graphite/Black/White, Maroon/Black/White, Navy/Black/White, Purple/Black/White, Red/Black/White, Royal/Black/White, Black/Gold/White

Jacket \$35: Men's AK01TU; Youth AK01TY; Ladies' AK01TL; Girls' AK01TG

Jacket Sizes: Men's S-3XL; Youth S-L; Ladies' XS-2XL; Girls' XXS-L

- 100% Polyester Activeknit
- Imported

Upcharges: 2XL=\$2, 3XL=\$4



NEW 2017



NEW G IMPULSE WARM-UP \$55 (Blank)

Jacket Colors: Black/Purple/White, Black/Red/White, Black/Royal/White, Navy/Navy/White, Black/Black/White

Contender Pant Colors: Black, Red, Purple, Navy, Royal

Jacket \$35: Adult AK02TU; Youth AK02TY

Jacket Sizes: Adult S-3XL; Youth S-L

- 100% Polyester Activeknit

Upcharges: 2XL=\$2, 3XL=\$4



NEW 2017



NEW G BALANCE WARM-UP \$55 (Blank)

Colors: Navy/White, Purple/White, Red/Black, Royal/Black, Black/White

Jacket \$35: Ladies' AK03TL; Girls' AK03TG

Jacket Sizes: Ladies' XS-2XL; Girls' XXS-L

- 100% Polyester Activeknit

Upcharges: 2XL=\$2, 3XL=\$4



NEW 2017



G APEX WARM-UP \$55 (Blank)

Colors: Black/White, Forest/White, Maroon/White, Navy/White, Purple/White, Red/White, Royal/White, Black/Gold, Black/Red, Black/Orange

Jacket \$35: Adult PT12TU; Youth PT12TY

Pant \$20: Adult PT12BU; Youth PT12BY

Sizes: Adult XS-3XL; Youth XS-L

- 100% Polyester Tricot Knit
- On-seam, Zippered Pockets (Jacket)
- Cordlock Adjustment At Hem
- Side Seam Pockets (Pant)
- Imported
- Set-in Sleeves
- Elastic Cuff
- Full Elastic Waistband With Drawstring
- Ankle Zip

Upcharges: 2XL=\$2, 3XL=\$4



ELITE PACKAGE:

BLANK ~~\$137~~ \$116

WITH ART SHOWN \$147 Qty 12

A. Sport-Tek® Spectator Beanie \$10 (Blank) PG 56

B. NEW G Elite Backpack \$22 (Blank) PG 58

C. NEW Long Sleeve Tee \$8 (Blank) PG 21

D. NEW Essential Double Dry® Short Sleeve Tee \$12 (Blank) PG 23

E. NEW G Elite Warm-Up Jacket \$35 (Blank) PG 8

F. NEW G Elite Warm-Up Pant \$25 (Blank) PG 8

G. NEW G Venture Jogger \$25 (Blank) PG 34



FREE Shipping On Orders Over \$100

INFINITY WARM-UP \$60 (Blank)

Colors: Black/White, Forest/White, Maroon/White, Navy/White, Purple/White, Red/White, Royal/White, Brown/White, Black/Red, Black/Gold, Black/Purple, Black/Royal

Outlet Colors: Columbia Blue/White, Cardinal/White, Kelly/White

Jacket \$35 Outlet Colors \$15: Men's PT06TU; Ladies' PT06TL; Youth PT06TY

Pant \$25 Outlet Colors \$10: Men's PT06BU; Ladies' PT06BL; Youth PT06BY

Sizes: Men's S-3XL; Ladies' S-2XL; Youth XXS-L

- 100% Polyester Tricot Knit
- Imported

Upcharges: 2XL=\$2, 3XL=\$4



ROGUE WARM-UP \$65 (Blank)

Jacket Colors: Graphite/Black

Outlet Colors: Black/Red, Royal/Graphite, Navy/Graphite, Purple/Graphite, Red/Graphite

Jacket \$35 Outlet Colors \$25: Men's 1501TU, Ladies' 1501TL

Jacket Sizes: Men's XS-5XL, Ladies' XS-2XL

Pant \$25: Men's 1501BU, Men's Athletic Cut 1502BU; Ladies' Athletic Cut 1502BL; Youth 1501BY

Pant Sizes: Men's XS-5XL, Men's Athletic Cut XS-3XL; Ladies' Athletic Cut XS-2XL; Youth S-L

- Performance Fleece (Polyester/Spandex)
- Interior Continuous Pocket (Jacket)
- Ankle Zip
- Headphone Port In Pocket (Jacket)
- Elastic Waistband With Interior Drawstring
- Imported

Upcharges: 2XL=\$2, 3XL=\$4, 4XL=\$8, 5XL=\$11



ADVANTAGE WARM-UP \$40 (Blank)

Colors: Black/White, Forest/White, Maroon/White, Navy/White, Purple/White, Red/White, Royal/White

Jacket \$25: Adult PT10TU; Youth PT10TY

Pant \$15: Adult PT10BU; Youth PT10BY

Sizes: Adult S-3XL; Youth XXS-L

- 100% Polyester Tricot Knit
- Imported

Upcharges: 2XL=\$2, 3XL=\$4



DEFENDER WARM-UP \$75 (Blank)

Jacket Colors: Black/White, Navy/White, Royal/White, Red/White, Purple/White, Forest/White, Maroon/White, Graphite/White

Pant Colors: Black, Graphite

Outlet Jacket \$25: Men's 1511TU; Youth 1511TY

Jacket \$50: Ladies' 1511TL; Girls' 1511TG

Performance Fleece Pant \$30: Men's 1501BU; Youth 1501BY

Brushed SpiritFlex Pant \$25: Ladies' SF03BL; Girls' SF03BG

Jacket Sizes: Men's S-3XL; Ladies' XS-2XL; Youth S-L; Girls' XXS-L

Pant Sizes: Men's XS-5XL; Ladies' XS-2XL; Youth S-L; Girls' XXS-L

- Polyester/Spandex Performance Fleece
- Imported

Upcharges: XL=\$2, 3XL=\$4, 4XL=\$8, 5XL=\$11



TITAN WARM-UP \$45 (Blank)

Colors: Black/White, Black/Gold, Forest/White, Navy/White, Red/White, Purple/White, Royal/White, Maroon/White, Black/Red

Jacket \$25: Men's 3505TU; Ladies' 3505TL; Youth 3505TY

Pant \$20: Men's 3505BU; Ladies' 3505BL; Youth 3505BY

Sizes: Men's S-6XL; Ladies' S-2XL; Youth XS-L

- 100% Polyester Shell
- Water-resistant
- No Drawstring In Youth Hood
- Ankle Zip
- Polyester/Cotton Jersey Lining
- Detachable Hood
- Elastic Waistband With Drawstring
- Imported

Upcharges: 2XL=\$2, 3XL=\$4, 4XL=\$8, 5XL=\$11, 6XL=\$14



TORRENT WARM-UP \$115 (Blank)

Jacket Colors: Black/Black, Black/White, Royal/White, Red/White, Navy/White, Purple/White

Pant Colors: Black, Royal, Red, Navy, Purple, Maroon, Forest

Jacket \$70: Men's 8007TU Ladies' 8007TL

Pant \$45: Men's 8008BU; Ladies' 8008BL

- 100% Micro-poly Shell
- Waterproof With Sealed Seams
- Drop Tail
- Imported
- Performance Lining With G2M® Moisture Management
- Hood With Bill
- Zippered, Reverse Entry Pockets

Upcharges: 2XL=\$2, 3XL=\$4, 4XL=\$8



G TRAINER WARM-UP \$35 (Blank)
Jacket Colors: Black/White, Forest/White, Maroon/White, Navy/White, Purple/White, Red/White, Royal/White
Pant Colors: Black, Forest, Maroon, Navy, Purple, Red, Royal
Jacket \$20: Adult 1709TU; Youth 1709TY **Pant \$15:** Adult 1709BU; Youth 1709BY
Sizes: Adult S-6XL; Youth XXS-L

- 100% Polyester Microfilament Shell
- Water-resistant
- Elastic Waistband With Drawstring
- Imported
- 100% Polyester Mesh Lining
- On-seam Pockets (Jacket)
- Adjustable Closure At Hem (Pant)

Upcharges: 2XL=\$2, 3XL=\$4, 4XL=\$8, 5XL=\$11, 6XL=\$14



NEW G PURSUIT JACKET \$27 (Blank)
Colors: Graphite, Navy, Purple, Red, Royal, Black
Item: Men's 1713TU; Ladies' 1713TL; Youth 1713TY
Sizes: Men's S-3XL; Ladies' XS-2XL; Youth S-L

- 100% Polyester Micro-poly Shell
- G2M® Performance Body Lining
- Reverse-entry Welt Pockets
- Water-resistant Finish
- No Drawstrings In Youth Hood
- Imported

Upcharges: 2XL=\$2, 3XL=\$4



NEW 2017



G DEFIANCE WARM-UP \$60 (Blank)
Jacket Colors: Graphite/White, Graphite/Red, Graphite/Royal, Graphite/Navy, Graphite/Purple, Graphite/Forest, Graphite/Maroon, Black/Red, Black/Orange, Black/Gold, Black/White
Pant Colors: Black, Graphite, Red, Royal, Navy
Jacket \$40: Adult 1701TU; Youth 1701TY **Pant \$20:** Men's 1701BU; Ladies' 1710BL; Youth 1701BY; Girls' 1710BG
Jacket Sizes: Adult XS-3XL; Youth S-L **Pant Sizes:** Men's XS-3XL; Ladies' XS-2X; Youth S-L; Girls' S-L

- 100% Polyester Microfilament Shell
- Detachable Hood
- Side Seam Pockets (Pant)
- Imported
- G2M® Moisture Management Lining
- No Drawstring In Youth Hood
- Elastic Waistband With Drawstring (Pant)
- Water-resistant
- On-seam, Zippered Pockets (Jacket)
- Ankle Zip

Upcharges: 2XL=\$2, 3XL=\$4



NEW C CONVERTIBLE 1/4 ZIP JACKET \$45 (Blank)
Colors: Athletic Royal/White, Black/White, Navy/White, Scarlet/White, Stone Gray/White
Item: Adult 55042TU
Sizes: Adult S-3XL

- Body-100% Polyester Stretch Woven
- Zip Off Sleeves
- Drawcord Adjustable Hem
- Yoke/Sleeve: 100% Polyester Open Mesh
- Front Muff Pocket
- Imported

Upcharges: 2XL=\$2, 3XL=\$4



NEW 2017



NEW C HOODED SOFTSHELL JACKET \$70 (Blank)
Colors: Black, Dark Platinum Gray, Off White Pearl
Item: Men's 55043TU; Ladies' 55043TL
Sizes: Men's S-3XL; Ladies' XS-2XL

- Body-100% Polyester
- Media Friendly Pockets & Features
- Tailored Fit
- Imported
- Bonded Interlock Breathable Wind And Water Resistant Fabric
- Attached Scuba Hood To Protect You From The Elements
- Mesh Pocket Lining

Upcharges: 2XL=\$2, 3XL=\$4



NEW 2017



NEW G POLAR LIGHTWEIGHT DOWN JACKET \$45 (Blank)
Colors: Black
Item: Men's 1552TU; Ladies' 1552TL
Sizes: Men's S-3XL; Ladies' XS-XL

- Shell: 100% Nylon
- Fill: 45% Grey Duck Down/55% Synthetic Duck Down Made From 100% Polyester
- Water Resistant
- On-Seam Side-Entry Pockets
- Stretch Binding Around Hem And Sleeve Openings
- Imported

Upcharges: 2XL=\$2, 3XL=\$4

NEW 2017



G ACCELERATE 1/2 ZIP JACKET \$40 (Blank)
Colors: Red/White, Royal/White, Black/White, Graphite/White, Navy/White, Purple/White
Item: Men's 1712TU; Ladies' 1712TL; Youth 1712TY
Sizes: Men's XS-3XL; Ladies' XS-2XL; Youth S-L

- 100% Polyester
- Imported
- G2M® Performance Lining
- Water-resistant

Upcharges: 2XL=\$2, 3XL=\$4



FIND THE RIGHT FIT

Choose The Right Tool For You Based On Your Goals And Needs

TEAMSTORE
 Brand and sell exclusive apparel for your team. We'll organize and ship to your buyers.



teamstore.gtmsportswear.com



Handle team orders or fundraisers with ease and convenience. Have your gear shipped directly to you.

coachsassistant.gtmsportswear.com



**NEW
2017**

ULTRAFUSE™

WARM-UP JACKETS

NEW UF POPOVER JACKET \$70

Item: Adult U706TU; Ladies' U706TL; Youth U706TY

Sizes: Adult XS-3XL; Ladies' XS-2XL; Youth S-L

- 100% Polyester
- Exposed 1/2 Length Zipper
- Dropped Shoulder Seam Offer A Relaxed Fit
- Self-Lined 3-Panel Hood With A Draw Cord Provide Adjustable Coverage
- Pleat Around Body Waist
- Dual Purpose Front Kangaroo Pocket
- Imported

Minimum Quantity 6 On Initial Order. Order Ships Within 5-7 Weeks After Art And Credit Approval. Call Your Style Consultant For Specific Delivery Date. Upcharges: 2XL=\$2, 3XL=\$4

NEW UF WOVEN JACKET \$75

Item: Adult U703TU; Ladies' U703TL; Youth U703TY

Sizes: Adult S-3XL; Ladies' XS-2XL; Youth S-XL

- 100% Polyester
- Exposed Full Zip Closure
- On Seam Pockets
- Self-Lined 3-Panel Hood With A Draw Cord Provide Adjustable Coverage
- Dropped Back Hem Enhances Coverage
- Imported

Minimum Quantity 6 On Initial Order. Order Ships Within 5-7 Weeks After Art And Credit Approval. Call Your Style Consultant For Specific Delivery Date. Upcharges: 2XL=\$2, 3XL=\$4

**No extra charge!
UltraFuse™ art
is included in
the price.**



MOTIVATE



CHAOS



SUPERNOVA



VOYAGE



CHAOS



SUPERNOVA



DREAM



PRISM



AMPED



AMPED



PRISM



DREAM



CRUSADER



WAVELENGTH



DYNAMIC



RIVAL



WAVELENGTH



SOLID



SOLID



HERITAGE



**Discounted Team Pricing on UltraFuse™!
Call 1.877.255.2785 today.**



ULTRAFUSE™ WARM-UPS



No extra charge!
UltraFuse™ art
is included in
the price.



UF FULL ZIP WARM-UP \$135
UF 1/2 ZIP WARM-UP \$110
UF LIGHTWEIGHT 1/2 ZIP PULLOVER \$55
Jacket \$85: Adult U701TU; Ladies' U702TL; Youth U701TY; Girls' U702TG
Pant \$50: Adult U701BU; Ladies' U702BL; Youth U701BY; Girls' U702BG
Sizes: Adult XS-4XL; Ladies' XS-2XL; Youth S-L; Girls' XXS-L
1/2 Zip Pullover \$60: Men's U267TU; Ladies' U267TL
Lightweight 1/2 Zip Pullover \$55: Men's U704TU; Ladies' U704TL
Sizes: Men's XS-3XL; Ladies' XS-2XL

- Brushed Polyester/Spandex
- Zippered Pockets (Jacket)
- Headphone Port In Right Pocket
- Athletic Cut With Raglan Sleeves (Pullover)
- Ladies' Style Includes Curved Side Vents For Feminine Contouring (Pullover)
- Ankle Zip
- Imported

Minimum Quantity 6 On Initial Order. Order Ships Within 5-7 Weeks After Art And Credit Approval. Call Your Style Consultant For Specific Delivery Date.
 Upcharges: 2XL-\$2, 3XL-\$4, 4XL-\$8

CHISEL



WEB



TERMINATOR



MACH5



CHAOS®



FIERCE®



DIGITAL CAMO®



ECLIPSE®
(ONLY AVAILABLE IN UNISEX/YOUTH)



PRIME



MIRAGE®



TERMINATOR®



NIGHTFALL®



PHANTOM



TORQUE®



SMASH HIT



Discounted Team Pricing on UltraFuse™!
Call 1.877.255.2785 today.

Champion **ULTRAFUSE™ MAX** WARM-UPS

Stand out at track meets with customizable warm-ups from UltraFuse™ Max. Design your look with ease by pairing the colors and patterns of UltraFuse™ Max to the specific zones of your warm-up.

1

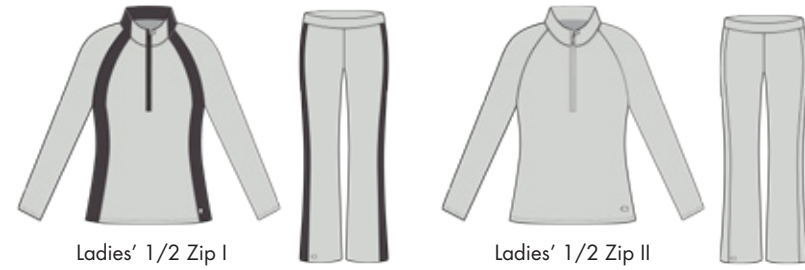
CHOOSE YOUR PRODUCT AND DESIGN

Discounted Team Pricing on UltraFuse™!
Call 1.877.255.2785 today.

UF MAX 1/2 ZIP WARM-UP \$110
UF LIGHTWEIGHT 1/2 ZIP PULLOVER \$55
1/2 Zip Pullover \$60: Men's U267TU; Ladies' U267TL
Lightweight 1/2 Zip Pullover \$55: Men's U704TU; Ladies' U704TL
1/2 Zip Pullover Sizes: Men's XS-3XL; Ladies' XS-2XL
Lightweight 1/2 Zip Pullover Sizes: Men's XS-3XL; Ladies' XS-2XL
Pant \$50: Adult U701BU; Ladies' U702BL; Youth U701BY; Girls' U702BG
Pant Sizes: Adult XS-4XL; Ladies' XS-2XL; Youth S-L; Girls' XXS-L

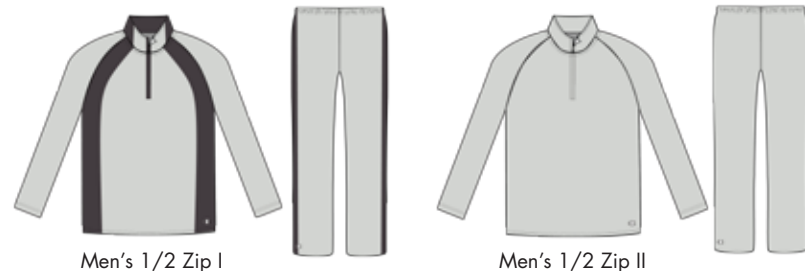
- Brushed Polyester/Spandex
- Headphone Port In Right Pocket
- Ankle Zip
- Athletic Cut With Raglan Sleeves
- Imported
- Ladies' Style Includes Curved Side Vents For Feminine Contouring

Minimum Quantity 6 On Initial Order. Order Ships Within 5-7 Weeks After Art And Credit Approval.
Call Your Style Consultant For Specific Delivery Date.
Upcharges: 2XL=\$2, 3XL=\$4, 4XL=\$8



Ladies' 1/2 Zip I

Ladies' 1/2 Zip II



Men's 1/2 Zip I

Men's 1/2 Zip II

UF MAX WARM-UP \$135
Jacket \$85: Adult U701TU; Ladies' U702TL; Youth U701TY; Girls' U702TG
Pant \$50: Adult U701BU; Ladies' U702BL; Youth U701BY; Girls' U702BG
Sizes: Adult XS-4XL; Ladies' XS-2XL; Youth S-L; Girls' XXS-L

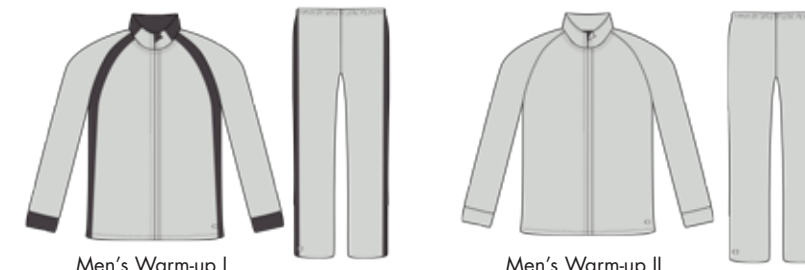
- Brushed Polyester/Spandex
- Zippered Pockets
- Headphone Port In Right Pocket
- Ankle Zip
- Imported

Minimum Quantity 6 On Initial Order. Order Ships Within 5-7 Weeks After Art And Credit Approval.
Call Your Style Consultant For Specific Delivery Date.
Upcharges: 2XL=\$2, 3XL=\$4, 4XL=\$8



Ladies' Warm-up I

Ladies' Warm-up II



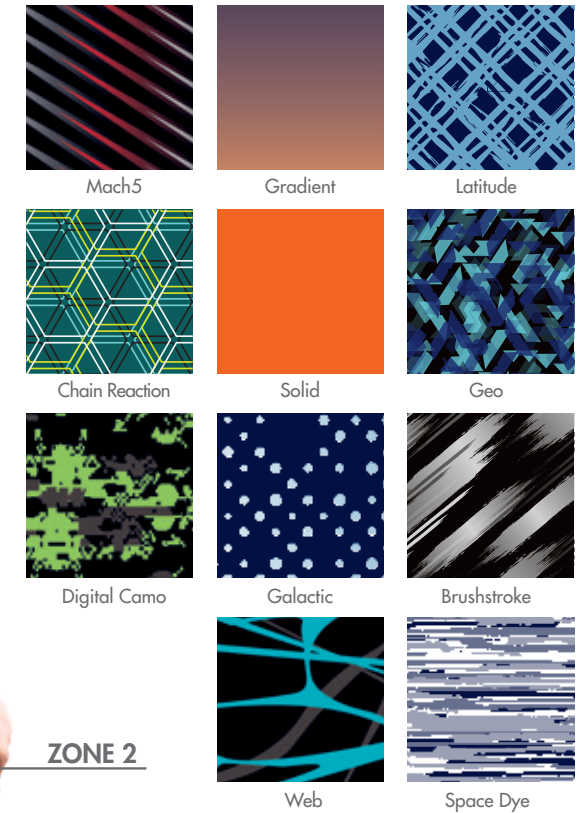
Men's Warm-up I

Men's Warm-up II

2

PICK YOUR PATTERNS

After choosing your product and design, it's time to pick your patterns. Choose from our eleven options and select which zones you'd like the pattern applied.



ZONE 1

ZONE 2



MAKE IT YOUR OWN WITH COLORS AND ART

After choosing your pattern, customize it with over 40 color options. Get inspired by thousands of art design templates or submit your own custom art design.



3

TRAINING GEAR

NEW Essential Double Dry® Short Sleeve Tee **\$12** (Blank) PG 23
NEW Core Training Short **\$18** (Blank) PG 33



NEW Essential Double Dry® Long Sleeve Tee **\$15** (Blank) PG 23
NEW Core Training Short **\$18** (Blank) PG 33

NEW HANES SHORT SLEEVE TAGLESS® TEE WHITE **\$4** COLOR **\$5** (Blank)

Colors: Ash, Athletic Orange, Black, Blue Horizon, Candy Orange, Cardinal, Carolina Blue, Charcoal Heather, Charisma Coral, Clean Mint, Daffodil Yellow, Dark Chocolate, Deep Forest, Deep Red, Deep Royal, Denim, Fatigue Green, Gold, Kelly, Lavender, Lime, Light Blue, Light Steel, Maroon, Natural, Navy, Orange, Oxford Grey, Pale Pink, Pebble, Pink, Purple, Safety Green, Safety Orange, Sand, Sapphire, Shamrock Green, Smoke, Stonewash Blue, Stonewash Green, Teal, White, WOW Pink, Yellow, Vintage Grey

Item: Men's 14500TU; Ladies' 14500TL; Youth 14500TY

Sizes: Men's S-6XL; Ladies' S-3XL; Youth XS-XL

• 6 Oz. Pre-shrunk 100% ComfortSoft Cotton | 5.2 Oz. Pre-shrunk 100% ComfortSoft Cotton | Light Steel And Ash Are 90/10 Cotton/Polyester | Charcoal Heather, Oxford Grey, Safety Green And Safety Orange Are 60/40 Cotton/Polyester

• Tag-free Neck Label

• Imported

Upcharge: 2XL=\$1, 3XL=\$2, 4XL=\$4, 5XL=\$5, 6XL=\$6 | Call For Additional Sizing Options



NEW 2017



NEW HANES LONG SLEEVE TAGLESS® TEE **\$8** YOUTH **\$7** (Blank)

Colors: Deep Forest, Deep Red, Deep Royal, Light Steel, Black, Navy, White, Orange, Lime, Ash, Smoke

Item: Adult 14501TU; Youth 14501TY

Sizes: Adult S-3XL; Youth XS-XL

• 6.0 Oz., Pre-shrunk 100% ComfortSoft Cotton; Safety Green Is 60/40 Cotton/Polyester

• Rib Cuffs

• Double-needle Stitched Lay-flat Collar, Armholes And Sleeves

• Tag-free Neck Label

• Shoulder-to-shoulder Taping

• Imported

Upcharge: 2XL=\$1, 3XL=\$2 | Call For Additional Sizing Options



NEW 2017



NEW SHORT SLEEVE TEE **\$6** (Blank)

Men's Colors: Ash, Black, Brown, Cardinal, Charcoal Heather, Dark Green, Gold, Kelly, Light Steel, Maroon, Navy, Orange, Purple, Red, Royal, Vegas Gold, White

Youth Colors: Black, Dark Green, Light Steel, Maroon, Navy, Red, Royal, White

Item: Men's 15050TU; Youth 15050TY

Sizes: Men's S-3XL; Youth S-XL

• Body-100% Cotton

• Set-in Sleeve

• Imported

• Taped Crew Neck

• Two-needle Stitched Bottom And Sleeves

Upcharge: 2XL=\$2, 3XL=\$4



NEW 2017



NEW 100% COTTON LONG SLEEVE TEE **\$9** (Blank)

Colors: Black, Light Steel, Navy, Royal Blue, Scarlet, White

Item: Adult 15047TU

Sizes: Adult S-2XL

• Body-5.2 Oz. 100% Cotton

• Taped Crew Neck

• Ribbed Cuffs

• Imported

Upcharge: 2XL=\$2



NEW 2017



NEW PRODUCT FROM



PRACTICE PACKAGE:

BLANK ~~\$44~~ **\$42**

WITH ART SHOWN **\$52** Qty 12

A. **NEW** Women's Essential Double Dry® Short Sleeve Tee **\$12** (Blank) PG 23

B. **NEW** Absolute Fusion Racerback Bra **\$14** (Blank) PG 27

C. **NEW** Synergy Short **\$18** (Blank) PG 32

NEW Women's Essential Double Dry® Short

Sleeve Tee **\$12** (Blank) PG 23

NEW Synergy Short **\$18** (Blank) PG 32

NEW ESSENTIAL DOUBLE DRY® SHORT SLEEVE TEE **\$12** (Blank)

Colors: Black, Dark Green, Gold, Kelly, Light Blue, Maroon, Navy, Neon Lime Green, Orange, Purple, Royal Blue, Safety Green, Safety Green Camo, Safety Orange, Safety Orange Camo, Scarlet, Stone Gray, Stone Gray Camo, Team Navy Camo, White, WOW Pink, WOW! Pink Camo

Item: Adult 15040TU; Ladies' 15040TL; Youth 15040TY

Sizes: Adult S-5XL; Ladies XS-2XL; Youth S-XL

- Body-100% Polyester
- Double Dry® Fabric Wicks Moisture Away
- FreshIQ Advanced Odor Protection Technology
- 50+ VPF Rating, Excellent UV Protection
- Imported

Upcharge: 2XL=52, 3XL=54, 4XL=55, 5XL=55



NEW ESSENTIAL DOUBLE DRY® LONG SLEEVE TEE **\$15** (Blank)

Colors: Safety Green, Black, Gold, Dark Green, Light Blue, Maroon, Navy Camo, Navy, Neon Green, Purple, Royal, Safety Orange, Scarlet, Safety Green Camo, Safety Orange Camo, Stone Gray Camo, Stone Gray, White, WOW! Pink Camo, WOW Pink

Item: Men's 15041TU; Ladies' 15041TL

Sizes: Men's XS-3XL; Ladies' XS-2XL

- Body-100% Polyester
- Double Dry® Fabric Wicks Moisture Away
- FreshIQ Advanced Odor Protection Technology
- 50+ VPF Rating, Excellent UV Protection
- Imported

Upcharge: 2XL=52, 3XL=52



NEW WOMEN'S ESSENTIAL DOUBLE DRY® SHORT SLEEVE TEE **\$12** (Blank)

Colors: Black, Dark Green, Gold, Kelly, Light Blue, Maroon, Navy, Neon Lime Green, Orange, Purple, Royal Blue, Safety Green, Safety Green Camo, Safety Orange, Safety Orange Camo, Scarlet, Stone Gray, Stone Gray Camo, White, WOW Pink, WOW! Pink Camo

Item: Ladies' 15040TL

Sizes: Ladies' XS-2XL

- Body-100% Polyester
- Double Dry® Fabric Wicks Moisture Away
- FreshIQ Advanced Odor Protection Technology
- 50+ VPF Rating, Excellent UV Protection
- Imported

Upcharge: 2XL=52



NEW MEN'S HANES X-TEMP™ PERFORMANCE TANK \$7 (Blank)

Colors: Black, Clean Mint, Deep Red, Deep Royal, Light Steel, Navy, Neon Blue Heather, White

Item: Men's 14506TU

Sizes: Men's S-3XL

- Body-4.5 Oz 60% Cotton/40% Polyester Ring Spun Jersey
- Moisture Wicking With Dynamic Vapor Control
- Imported

- Tag-free For Added Comfort
- Performance Tank Features 40+ UPF Rating

Upcharge: 2XL-52, 3XL-52



NEW 2017



NEW G SYDNEY SHORT TANK \$12 (Blank)

Colors: White, Black, Charcoal, Blaze Yellow, Hot Pink

Outlet Colors \$6: Dewberry, Aqua Splash, Virtual Pink

Item: Ladies' 0345TL; Girls' 0345TG

Sizes: Ladies' XS-2XL; Girls' S-L

- MotionLite™ Knit Fabric
- Cropped Tulip Styling
- Imported

Upcharges: 2XL-52



Outlet Colors

NEW 2017



X-TEMP PACKAGE:

BLANK ~~\$41~~ **\$39**

WITH ART SHOWN **\$56** Qty 12

A. **NEW** Hanes Men's X-Temp® Performance Tank **\$7** (Blank) PG 24

B. **NEW** G Victory Duffle **\$23** (Blank) PG 57

C. **NEW** Mesh 9" Short **\$11** (Blank) PG 33



NEW G LAYLA LONG TANK \$13 (Blank)

Colors: White, Black, Charcoal, Blaze Yellow, Hot Pink

Outlet Colors \$6: Dewberry, Aqua Splash, Virtual Pink

Item: Ladies' 0346TL; Girls' 0346TG

Sizes: Ladies' XS-2XL; Girls' S-L

- MotionLite™ Knit Fabric
- Racerback Styling
- Imported

Upcharges: 2XL-52



Outlet Colors

NEW 2017



G LOOSE FITTING TANK \$10 (Blank)

Colors: Atomic Green, Black, Charcoal Heather, Hot Coral, Navy, Red, Royal, Purple, White, Blue Jewel, Sea Green, Fuchsia

Item: Ladies' 0337TL; Girls' 0337TG

Sizes: Ladies' XS-2XL; Girls' XXS-L

- Cotton/Polyester Blend
- Imported

Upcharges: 2XL-52



NEW ATHLETIC TANK \$8 (Blank)

Colors: White, Ash, Athletic Heather, Black, Dark Green, Gold, Kelly, Light Blue, Maroon, Navy, Orange, Purple, Red, Royal

Item: Adult 11029TU; Youth 11029TY

Sizes: Adult S-3XL; Youth S-L

- 50% Polyester/50% Cotton Jersey Knit
- Imported

Upcharges: 2XL-52, 3XL-52



NEW 2017



NEW Men's Hanes X-Temp® Performance Tank **\$7** (Blank) PG 24

NEW Men's 9" Mesh Short **\$11** (Blank) PG 33



TEAM TEE PACKAGE:
 BLANK ~~\$148~~ **\$133**
 WITH ART SHOWN **\$154** Qty 12
 A. **NEW** Revival Jacket **\$60** (Blank) gtmtrack.com
 B. **NEW** Layla Long Tank **\$13** (Blank) PG 25
 C. **NEW** Absolute SmoothTec® Band Tight **\$30** (Blank) PG 34
 D. **NEW** Absolute Fusion Racerback Bra **\$14** (Blank) PG 27
 E. **NEW** Memphis Retro Echo Short **\$31** PG 36

NEW ABSOLUTE FUSION RACERBACK BRA **\$14** (Blank)

- Colors: Black, White
- Item: Ladies' 15016TL
- Sizes: Ladies' XS-XL
- Body & Liner-87% Polyester 13% Spandex
- T-back Design For Ease Of Movement
- Imported



NEW COLORS MOTION BRA TOP **\$13** (Blank)

- Colors: Blue Jewel, Hot Coral, Atomic Green, Fuchsia, Citrus, Red, Royal, Navy, Black, Purple, Swiss Dot, Color Surge, Memphis Retro, Geo Fusion
- Item: Ladies' 1012TL; Girls' 1012TG
- Sizes: Ladies' XS-2XL; Girls' S-L
- SpiritFlex Lite™ (Polyester/Spandex)
- Imported



NEW COLORS



NEW PRODUCT FROM



NEW Absolute Fusion Racerback Bra (Blank) **\$14** PG 27
NEW Max Kaleidoscope Ankle Legging I **\$50** PG 38



ULTRAFUSE™ TRAINING TOPS

Discounted Team Pricing on UltraFuse™!
Call 1.877.255.2785 today.



UF PRACTICE WEAR

Racerback Tank \$35: Ladies' U180TL; Girls' U180TG

Full Back Tank \$32: Ladies' U182TL; Girls' U182TG

Bra Top \$26: Ladies' U181TL; Girls' U181TG

Boy-Cut Lined Short \$28: Ladies' U101BL; Girl' U101BG

Sizes: Ladies' XS-2XL; Girls' XXS-L

- Polyester/Spandex
- G2M® Moisture Management Technology
- Imported

Minimum Quantity 6 On Initial Order. Order Ships Within 5-7 Weeks After Art And Credit Approval. Call Your Style Consultant For Pricing Under Quantity 12 And Specific Delivery Date. Upcharges: 2XL-S2



Full Back Tank



Racerback Tank



Bra Top



Loose Fitting Tank



Reversible Tank



Reversible Bra Top

UF LOOSE FITTING TANK \$28

Item: Ladies' U183TL; Girls' U183TG

Size: Ladies' XS-2XL; Girls' XXS-L

- 100% Polyester
- G2M® Moisture Management Technology
- Imported

Minimum Quantity 6 On Initial Order. Order Ships Within 5-7 Weeks After Art And Credit Approval. Call Your Style Consultant For Pricing Under Quantity 12 And Specific Delivery Date. Upcharges: 2XL-S2

UF REVERSIBLE TANK \$48

UF REVERSIBLE BRA TOP \$38

Reversible Tank: Ladies' U184TL; Girls' U184TG

Reversible Bra Top: Ladies' U185TL; Girls' U185TG

Sizes: Ladies' XS-2XL; Girls' XXS-L

- Polyester/Spandex
- G2M® Moisture Management Technology
- Imported

Minimum Quantity 6 On Initial Order. Order Ships Within 5-7 Weeks After Art And Credit Approval. Call Your Style Consultant For Pricing Under Quantity 12 And Specific Delivery Date. Upcharges: 2XL-S2

DeeDee Trotter
400m Runner

LIVE WIRE



KALEIDOSCOPE®



MOTION®



CENTURY®



WHIPLASH®



SOLID



SUPERNOVA®



ENVY®



MAYHEM



CHAOS®



CHEVRON MOTIF



BRUSHSTROKE MOTIF



REVERSIBLE PRACTICE WEAR

AFTERGLOW



FRENZY



REWIND



WATERCOLOR



← No extra charge!
UltraFuse™ art is
included in the price.

Champion **ULTRAFUSE™ MAX** TRAINING TOPS

Train toward victory in the durable, custom apparel from UltraFuse™ Max. Design your custom look with ease by pairing exclusive patterns and colors to each zone.

1

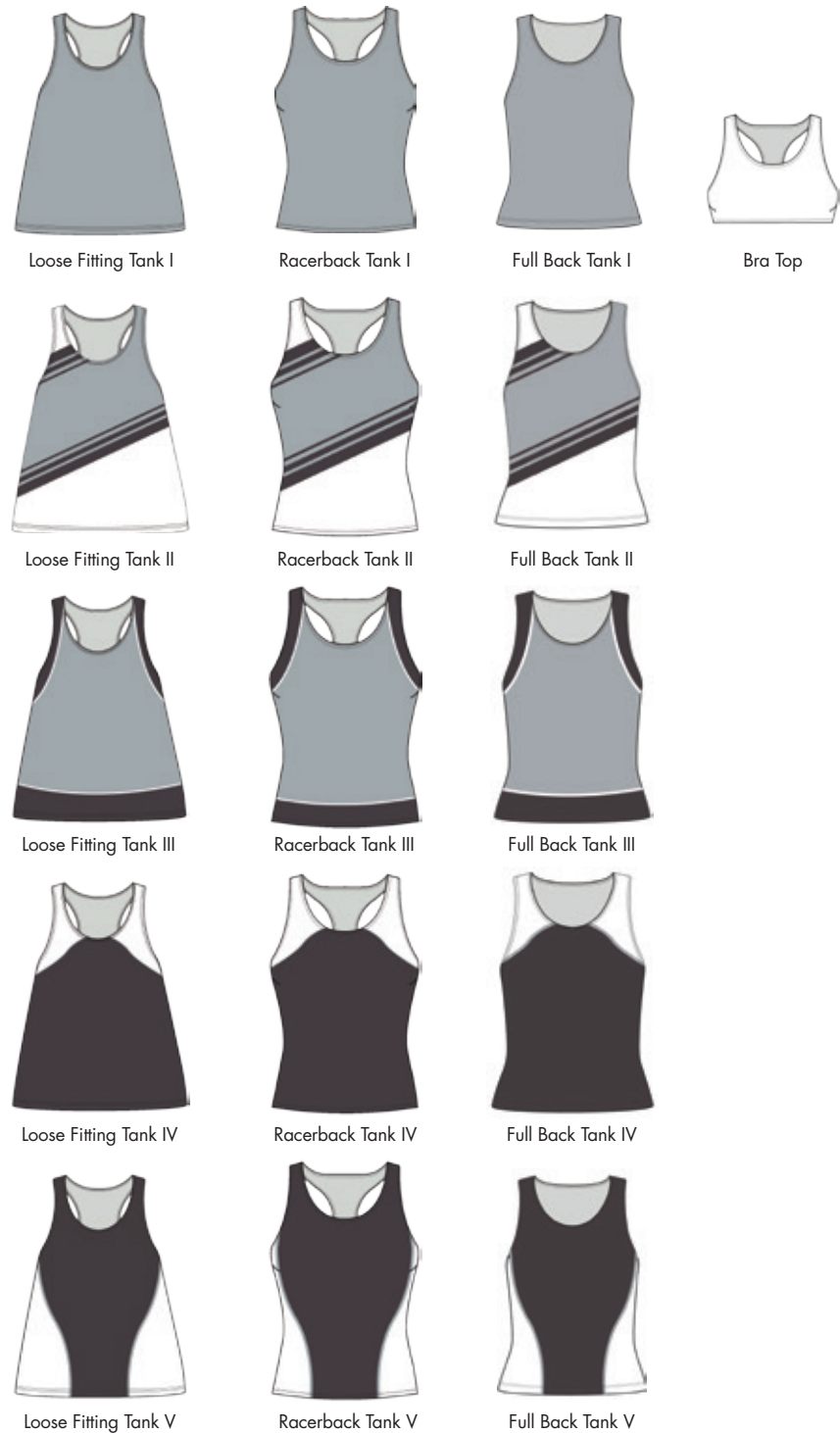
CHOOSE YOUR PRODUCT AND DESIGN

Discounted Team Pricing on UltraFuse™!
Call 1.877.255.2785 today.

UF MAX PRACTICE WEAR

- Racerback Tank \$35:** Ladies' U180TL; Girls' U180TG
- Full Back Tank \$32:** Ladies' U182TL; Girls' U182TG
- Max Loose Fitting Tank \$28:** Ladies' U183TL; Girls' U183TG
- Bra Top \$26:** Ladies' U181TL; Girls' U181TG
- Sizes:** Ladies' XS-2XL; Girls' XXS-L
- Polyester/Spandex
- G2M® Moisture Management Technology
- Imported

Minimum Quantity 6 On Initial Order. Order Ships Within 5-7 Weeks After Art And Credit Approval.
Call Your Style Consultant For Pricing Under Quantity 12 And Specific Delivery Date.
Upcharges: 2XL=52



2

PICK YOUR PATTERNS

After choosing your product and design, it's time to pick your patterns. Choose from our ten options and select which zones you'd like the pattern applied.




MAKE IT YOUR OWN WITH COLORS AND ART

After choosing your pattern, customize it with over 40 color options. Get inspired by thousands of art design templates or submit your own custom art design.

3



NEW  VAPOR® POWER FLEX 3/4 TIGHT **\$15** (Blank)

Colors: Black, White

Item: Men's 15012BU

Sizes: Men's S-2XL

- Body-84% Polyester/16% Spandex, Inserts-92% Polyester/8% Spandex
- Quick Drying
- Stretch To Move With You, For Ease Of Movement

- Wicking For Moisture Management
- Targeted Ventilation Zones For Breathability
- Imported

Upcharge: 2XL=52



NEW 2017



NEW  MEN'S 9" MESH SHORT **\$11** (Blank)

Colors: Athletic Dark Green, Athletic Gray, Athletic Royal, Black, Maroon, Navy, Scarlet, C. Gold, Orange, Purple

Item: Men's 35338BU; Youth 35339BY

Sizes: Men's S-3XL; Youth S-2XL

- Body-100% Polyester Mesh, Liner-100% Polyester Tricot
- 7" Inseam (Youth)
- Full Athletic Fit

- Multi-needle Waistband With Internal Looped Drawcord
- 2-needle Bottom Hem
- Imported

Upcharge: 2XL=52, 3XL=54



NEW 2017



NEW  VAPOR® POWER FLEX 9" SHORT **\$17** (Blank)

Colors: Black, Navy/Awe Blue, Scarlet/Black, Stealth/Storm Night

Item: Men's 40007BU

Sizes: Men's S-2XL

- Body-84% Polyester/16% Spandex, Inserts-92% Polyester/8% Spandex
- Compression Fit
- Stretch To Move With You, For Ease Of Movement

- Wicking For Moisture Management
- Targeted Ventilation Zones For Breathability
- Imported

Upcharge: 2XL=52



NEW 2017



NEW  WOMEN'S ACTIVE 5" MESH SHORT **\$11** (Blank)

Colors: Black, Dark Green, Athletic Navy, Athletic Royal, Scarlet

Item: Ladies' 35339BL

Sizes: Ladies' S-2XL

- Body-100% Polyester Mesh, Liner-100% Polyester Tricot On Left Hem
- 5" Inseam (Women)
- Imported

- Tricot Lining To Prevent Show-through
- Side Pockets

Upcharge: 2XL=52



NEW 2017



NEW  MEN'S 9" DOUBLE DRY® COMPRESSION SHORT **\$20** (Blank)

Colors: Athletic Navy, Athletic Royal, Black, Maroon, Scarlet, Team Dark Green, White

Item: Men's 15031BU

Sizes: Men's S-3XL

- Body-84% Cationic Polyester/16% Spandex, Insert-92% Polyester/8% Spandex
- Double Dry® Fabric Wicks Moisture Away From The Body And Helps Control Moisture Buildup
- Compression Fit

- Targeted Ventilation Zones For Breathability
- Stretch To Move With You, For Ease Of Movement
- Imported

Upcharge: 2XL=52, 3XL=54



NEW 2017



NEW  CORE TRAINING SHORT **\$18** (Blank)

Colors: Black, Charcoal Heather, Maroon, Scarlet, Navy, Athletic Royal, Oxford Grey

Item: Mens 35333BU

Sizes: Mens S-3XL

- Body-100% Polyester
- On Seam Pockets
- Imported

- Double Dry® Fabric Wicks Moisture Away From The Body And Helps Control Moisture Buildup
- 10" Inseam

Upcharge: 2XL=52



NEW 2017



NEW  SYNERGY SHORT **\$18** (Blank)

Colors: Black

Item: Ladies' 8205BL; Girls' 8205BG

Sizes: Ladies' XS-2XL; Girls' XXS-L

- SpiritFlex™ (Polyester/Spandex)
- Exposed Waistband
- 3" Inseam
- Imported

Upcharges: 2XL=52

NEW 2017



NEW  LIBERTY SHORT **\$22** (Blank)

Colors: Black/Black, Color Surge/Black, Swiss Dot/Black, Geo Fusion/Black, Memphis Retro/Black

Item: Ladies' 8211BL; Girls' 8211BG

Sizes: Ladies' XS-2XL; Girls' XXS-L

- SpiritFlex™ Waistband
- 100% Polyester Brief Liner
- Imported

- 100% Micro-Poly Body
- 2.5" Inseam

Upcharges: 2XL=52



NEW 2017



NEW  VENTURE JOGGER **\$25** (Blank)

Colors: Black

Item: Adult AK04BU; Youth AK04BY

Sizes: Adult S-3XL; Youth S-L

- 100% Polyester With Matte Surface And Brushed Backing
- Cuffed Leg Opening With Ankle Zipper
- Imported
- Elastic Waistband With Interior Drawstring
- Welt Pockets

Upcharges: 2XL=\$2, 3XL=\$4



NEW  ABSOLUTE SMOOTHTEC™ BAND TIGHT **\$30** (Blank)

Colors: Black, Granite Heather

Item: Ladies' 35341BL

Sizes: Ladies' XS-2XL

- Body-84% Polyester/16% Spandex, Inserts-92% Polyester/8% Spandex
- Quick Drying
- Stretch To Move With You, For Ease Of Movement
- Wicking For Moisture Management
- Targeted Ventilation Zones For Breathability
- Imported

Upcharge: 2XL=\$2



 GROOVE ANKLE TIGHT **\$24** (Blank)

Item: Ladies' 05118L; Girls' 05118G

Sizes: Ladies' XS-2XL; Girls' XS-L

- SpiritFlex™ (Polyester/Spandex)
- 28" Inseam
- Imported

Upcharges: 2XL=\$2



 GROOVE CAPRI **\$20** (Blank)

Item: Ladies' 05108L; Girls' 05108G

Sizes: Ladies' XS-2XL; Girls' XS-L

- SpiritFlex™ (Polyester/Spandex)
- 18" Inseam
- Imported

Upcharges: 2XL=\$2



A.





B.



C.



ABSOLUTE PACKAGE:
 BLANK ~~\$56~~ **\$53**
 WITH ART SHOWN **\$71** Qty 12
 A. **NEW**  Absolute Smoothtec™ Band Tight **\$30** (Blank) PG 34
 B. **NEW** Sydney Short Tank **\$12** (Blank) PG 25
 C. **NEW**  Absolute Fusion Racerback Bra **\$14** (Blank) PG 27



FREE Shipping On Orders Over \$100 35



ULTRAFUSE™ TRAINING BOTTOMS

UF PRACTICE SHORTS

Synergy Short \$35: Ladies' U102BL; Girls' U102BG

Synergy Short Inseam: Ladies' 3"

Echo Short \$31: Ladies' U193BL; Girls' U193BG

Echo Short Inseam: Ladies' 3"

Sizes: Ladies' XS-2XL; Girls' XXS-L

- Polyester/Spandex
- G2M® Moisture Management Technology
- Imported

Minimum Quantity 6 On Initial Order. Order Ships Within 5-7 Weeks After Art And Credit Approval. Call Your Style Consultant For Pricing Under Quantity 12 And Specific Delivery Date. Upcharges: 2XL-S2



Synergy Short



Echo Short

UF CAPRI LEGGING \$40

UF ANKLE LEGGING \$50

Capri Legging: Ladies' U187BL; Girls' U187BG

Ankle Legging: Ladies' U188BL; Girls' U188BG

Sizes: Ladies' XS-2XL; Girls' XXS-L

- SpiritFlex™ (Polyester/Spandex)
- G2M® Moisture Management Technology
- Imported

Minimum Quantity 6 On Initial Order. Order Ships Within 5-7 Weeks After Art And Credit Approval. Call Your Style Consultant For Pricing Under Quantity 12 And Specific Delivery Date. Upcharges: 2XL-S2



Capri Legging



Ankle Legging

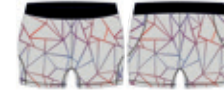
CIRCUIT



LIMITLESS



PRISM



GEO FUSION



OASIS



SOLID



MOTION



ENVY®



BRUSHSTROKE®



GALAXY



MEMPHIS RETRO



REPLAY



HIDEAWAY



PRISM



SPACE DYE



MYSTIC



DREAM®



LIVE WIRE®



GEO FUSION



OASIS



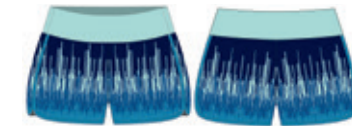
SOLID



LIMITLESS



PULSE



TROPICAL



NIGHTFALL®



CHAOS®



SOLID



SWIFT



SPACE DYE



MEMPHIS RETRO



REPLAY



TORQUE®



FIERCE®



WAVELENGTH®



Discounted Team Pricing on UltraFuse™!
Call 1.877.255.2785 today.

Champion **ULTRAFUSE™ MAX** TRAINING BOTTOMS

Train toward victory in the durable, custom apparel from UltraFuse™ Max. Design your custom look with ease by pairing exclusive patterns and colors to each zone.

Discounted Team Pricing on UltraFuse™!
Call 1.877.255.2785 today.

1

CHOOSE YOUR PRODUCT AND DESIGN

UF MAX CAPRI LEGGING \$40 UF MAX ANKLE LEGGING \$50

- Capri Legging \$40:** Ladies' U187BL; Girls' U187BG
Ankle Legging \$50: Ladies' U188BL; Girls' U188BG
Sizes: Ladies' XS-2XL; Girls' XXS-L
• SpiritFlex™ (Polyester/Spandex)
• G2M® Moisture Management Technology
• Imported

Minimum Quantity 6 On Initial Order. Order Ships Within 5-7 Weeks After Art And Credit Approval.
Call Your Style Consultant For Pricing Under Quantity 12 And Specific Delivery Date.
Upcharges: 2XL-S2



Capri Legging I



Capri Legging II



Capri Legging III



Ankle Legging I



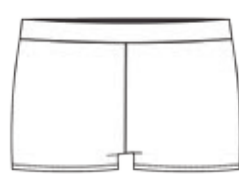
Ankle Legging II



Ankle Legging III



Freedom Short



Boy-Cut Short/
Boy-Cut Lined Short



Synergy Short



Echo Short

UF MAX PRACTICE SHORTS

- Synergy Short \$35:** Ladies' U102BL; Girls' U102BG
Synergy Short Inseam: Ladies' 3"
Echo Short \$31: Ladies' U193BL; Girls' U193BG
Echo Short Inseam: Ladies' 3"
Boy-Cut Short \$25: Ladies' U100BL; Girls' U100BG
Boy-Cut Short Inseam: Ladies' 2.75"
Boy-Cut Lined Short \$30: Ladies' U101BL; Girls' U101BG
Boy-Cut Lined Short Inseam: Ladies' 2.75"
Freedom Short \$31: Ladies' U189BL; Girls' U189BG
Freedom Short Inseam: Ladies' 2.5"
Sizes: Ladies' XS-2XL; Girls' XXS-L
Inseam: Ladies' 2.75"
• Polyester/Spandex
• G2M® Moisture Management Technology
• Imported

Minimum Quantity 6 On Initial Order. Order Ships Within 5-7 Weeks After Art And Credit Approval.
Call Your Style Consultant For Pricing Under Quantity 12 And Specific Delivery Date.
Upcharges: 2XL-S2

2

PICK YOUR PATTERNS

After choosing your product and design, it's time to pick your patterns. Choose from our ten options and select which zones you'd like the pattern applied.



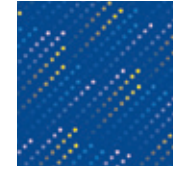
Kaleidoscope



Gradient



Optic



Rain



Solid



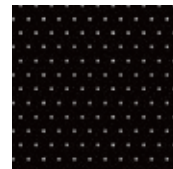
Snake Print



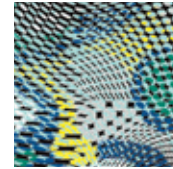
Soft Camo



Stellar



Swiss Dot



Color Surge

ZONE 2

ZONE 1

MAKE IT YOUR OWN WITH COLORS AND ART

After choosing your pattern, customize it with over 40 color options. Get inspired by thousands of art design templates or submit your own custom art design.


White	Black	Graphite	Aluminum	Silver	Navy
Royal	Columbia Blue	Red	Blaze	Cardinal	Maroon
Purple	Forest	Kelly	Army Green	Vegas Gold	Athletic Gold
Orange	Texas Orange	Brown	Hot Pink	Turquoise	Electric Blue
Aqua Splash	Jungle Green	Sea Green	Amethyst	Citrus	Hot Coral
Atomic Green	Fuchsia	Lavender Mist	Electric Pink	Blaze Yellow	Teal
Lime	Grape	Blush Pink	Light Yellow		

3

FLEECE

NEW PRODUCT FROM




NEW  Reverse Weave® Hoodie **\$30** (Blank) PG 44
NEW  Venture Jogger **\$25** (Blank) PG 34

NEW  POWERBLEND® FLEECE CREW **\$14** (Blank)

Colors: Black (Y), Brown, Cardinal, Charcoal Heather, Dark Green (Y), Gold, Kelly Green, Light Blue, Light Steel (Y), Maroon (Y), Navy (Y), Orange, Purple, Royal Blue (Y), Scarlet (Y), Vegas Gold, White

Item: Adult 15017TU; Youth 15017TY

Sizes: Adult S-3XL; Youth S-XL

- Body-9 Oz., 50% Cotton/50% Polyester, Rib-49% Cotton/49% Polyester/2% Spandex
- Set-in Armholes
- 1x1 Rib With Spandex
- Imported

(Y) = Youth
 Upcharge: 2XL-S2, 3XL-S4



**NEW
2017**



NEW  POWERBLEND® ECO® FLEECE HOODIE **\$18** (Blank)

Colors: Black (Y), Brown, Cardinal, Charcoal Heather (Y), Dark Green (Y), Gold, Light Blue, Light Steel (Y), Maroon (Y), Navy (Y), Orange, Purple, Scarlet (Y), Vegas Gold, Safety Green, Royal Blue (Y), Kelly

Item: Adult 15018TU; Youth 15018TY

Sizes: Adult S-3XL; Youth S-XL

- Body-9 Oz., 50% Cotton/50% Polyester, Rib-49% Cotton/49% Polyester/2% Spandex
- Set-in Armholes
- Front Pouch Pocket With Bartacks For Durability
- Two-ply Hood With Matching Drawstrings
- 1x1 Rib With Spandex
- Imported

(Y) = Youth
 Upcharge: 2XL-S2, 3XL-S4



**NEW
2017**



NEW  POWERBLEND® ECO® COLORBLOCK FLEECE HOODIE **\$25** (Blank)

Colors: Black/Scarlet, Charcoal Heather/Light Steel, Light Steel/Black, Light Steel/Navy, Light Steel/Royal, Navy/Gold, Navy/White, Black/Charcoal Heather, Charcoal Heather/White

Item: Adult 15022TU

Sizes: Adult S-3XL

- Body-9 Oz., 50% Cotton/50% Polyester, Rib-49% Cotton/49% Polyester/2% Spandex
- Front Pouch Pocket With Bartacks For Durability
- Two-ply Hood With Matching Drawstrings
- 1x1 Rib With Spandex
- Imported

Upcharge: 2XL-S2, 3XL-S4



**NEW
2017**





PACKAGE 3-4 ITEMS
5% OFF
SEE BACK COVER FOR DETAILS

TRAINING PACKAGE:

BLANK ~~\$78~~ **\$74**

WITH ART SHOWN **\$79** Qty 12

- A. **NEW** Reverse Weave® Hoodie **\$30** (Blank) PG 44
- B. **NEW** Performance All Sport Sock **\$8** (Blank) gtmtrack.com
- C. **NEW** Men's Sprint Training Pant **\$40** (Blank) gtmtrack.com

NEW POWERBLEND® FLEECE 1/4 ZIP **\$25** (Blank)

Colors: Black, Charcoal Heather, Light Steel, Navy, Dark Green

Item: Adult 70039TU

Sizes: Adult S-3XL

- Body: 9 Oz., 50% Cotton/50% Polyester, Rib: 49% Cotton/49% Polyester/2% Spandex
- Welt Pockets
- 1 x 1 Rib With Spandex
- Set-in Armholes
- Double-needle Stitching
- Imported

Upcharge: 2XL=\$2, 3XL=\$4



NEW 2017



NEW POWERBLEND® FLEECE FULL-ZIP **\$20** (Blank)

Colors: Black (Y), Charcoal Heather, Dark Green (Y), Light Steel (Y), Maroon (Y), Navy (Y), Royal (Y), Scarlet (Y)

Item: Adult 70038TU; Youth 70038TY

Sizes: Adult S-3XL; Youth S-XL

- Body: 9 Oz., 50% Cotton/50% Polyester | Rib: 49% Cotton/49% Polyester/2% Spandex
- Two-ply Hood With Matching Drawstrings (Adult)
- 1 x 1 Rib With Spandex
- Front Pouch Pocket With Bartacks For Durability
- Double-needle Stitching
- Imported

(Y) = Youth
Upcharge: 2XL=\$2, 3XL=\$4



NEW 2017



NEW POWERBLEND® FLEECE OPEN BOTTOM PANT WITH POCKETS **\$14** (Blank)

Colors: Black (Y), Charcoal Heather, Dark Green (Y), Light Steel (Y), Maroon (Y), Navy (Y), Orange, Royal (Y), Scarlet (Y)

Item: Adult 70038BU; Youth 70038BY

Sizes: Adult S-3XL; Youth S-XL

- Covered Elastic Waistband With Drawcord
- Double-needle Stitching
- Imported
- Side Pockets
- Body-50% Cotton/50% Polyester

(Y) = Youth
Upcharge: 2XL=\$2, 3XL=\$4



NEW 2017



NEW POWERBLEND® ECO® PANT WITHOUT POCKETS **\$12** (Blank)

Colors: Black (Y), Charcoal Heather, Dark Green (Y), Light Steel (Y), Maroon (Y), Navy (Y), Royal (Y), Scarlet (Y)

Item: Adult 15018BU; Youth 15018BY

Sizes: Adult S-3XL; Youth S-XL

- Body-50% Cotton/50% Polyester
- Elastic Cuff Leg Bottom
- Imported
- Covered Elastic Waistband
- Double-needle Stitching

Upcharge: 2XL=\$2, 3XL=\$4



NEW 2017



NEW REVERSE WEAVE® HOODIE \$30 (Blank)

Colors: Black, Dark Green, Oxford Gray, Maroon, Silver Gray, Scarlet, Navy, Cardinal

Item: Adult 15011TU

Sizes: Adult S-3XL

- Body-82% Cotton/18% Polyester, Rib-100% Cotton, Silver Gray-80% Cotton/20% Polyester, Oxford Gray-78% Cotton/22% Polyester
- Roomy Two-ply Hood Adjusts For Custom Comfort
- Stretch Rib-knit Side Panels Add Ease And Flexibility
- Imported
- Hand-warming Kangaroo Pocket Is Bar-tacked For Durability
- Full Athletic Fit, With Shoulder Seams For Shape And Double-stitch Trim For Strength

Upcharge: 2XL=\$2, 3XL=\$4



NEW
2017



NEW REVERSE WEAVE® CREW NECK SWEATSHIRT \$25 (Blank)

Colors: Black, Silver Gray, Maroon, Scarlet, Team Navy, Oxford Gray, C. Gold, Cardinal, Athletic Royal, Dark Green

Item: Adult 15003TU

Sizes: Adult S-3XL

- Body-82% Cotton/18% Polyester, Silver Gray Is 81%/19% Cotton/Polyester; Oxford Gray Is 78%/22% Cotton/Polyester
- Full Athletic Fit Allows Flexible Range Of Motion
- Stretchy Ribbed Side Panels Add Extra Ease And Freedom
- Shape-keeping Spandex Ribbing Trims Crewneck, Cuffs, And Hem
- Imported

Upcharge: 2XL=\$2, 3XL=\$4



NEW
2017



NEW REVERSE WEAVE® PANT WITH POCKETS \$25 (Blank)

Colors: Black, Navy, Oxford Grey, Silver Grey

Item: Adult 150118U

Sizes: Adult S-3XL

- Double-needle Stitching On The Body
- Loose Elastic Cuffs
- Side Pockets
- 1X1 Rib
- Rib Gusset In Crotch For Extra Movement
- Full Athletic Fit
- Body-12 Oz 82% Cotton/18% Polyester, Rib-100% Cotton

Upcharge: 2XL=\$2, 3XL=\$4



NEW
2017



NEW REVERSE WEAVE® PANT WITHOUT POCKETS \$15 (Blank)

Colors: Black, Navy, Oxford Grey, Silver Grey

Item: Adult 70054BU

Sizes: Adult S-3XL

- Double-needle Stitching On The Body
- Loose Elastic Cuffs
- No Pockets
- 1X1 Rib
- Rib Gusset In Crotch For Extra Movement
- Full Athletic Fit
- Body-12 Oz 82% Cotton/18% Polyester, Rib-100% Cotton

Upcharge: 2XL=\$2, 3XL=\$4



NEW
2017



PACKAGE 3-4 ITEMS
5% OFF
SEE BACK COVER FOR DETAILS

REVERSE WEAVE PACKAGE:
BLANK ~~\$81~~ \$77
WITH ART SHOWN \$93 Qty 12
A. NEW Reverse Weave® Hoodie \$30 (Blank) PG 44
B. NEW Reverse Weave® Pant With Pockets \$25 (Blank) PG 44
C. Sideline Duffel Bag \$26 (Blank) PG 57



ULTRAFUSE™ FLEECE



MATCH YOUR HOODIE TO YOUR UNIFORM!

PG 54

UF PERFORMANCE HOODIE \$50

Item: Adult U266TU, Youth U266TY

Sizes: Adult XS-5XL, Youth S-XL

- Performance Fleece (Polyester/Spandex)
- Self-fabric Cuffs And Bottom Band
- Headphone Port In Front Pocket
- Lined Hood
- Made In U.S.A. & Imported

Minimum Quantity 6 On Initial Order. Order Ships Within 5-7 Weeks After Art And Credit Approval. Call Your Sales Rep For Specific Delivery Date. Upcharges: 2XL=\$2, 3XL=\$4, 4XL=\$8, 5XL=\$11

MIRAGE®



MACH5



ALLOY



TERMINATOR®



TORQUE®



KALEIDOSCOPE



DIGITAL CAMO



WEB



DIMENSION



FIERCE®



CHISEL



**Discounted Team Pricing on UltraFuse™!
Call 1.877.255.2785 today.**

Champion ULTRAFUSE™ MAX FLEECE

Complete your team's head-to-toe look with custom hoodies from UltraFuse™ Max. Customize your look with ease by pairing exclusive patterns and colors to the zones of your hoodie.

**Discounted Team Pricing on UltraFuse™!
Call 1.877.255.2785 today.**



1

CHOOSE YOUR PRODUCT AND DESIGN

UF MAX PERFORMANCE HOODIE \$50

Item: Adult U266TU, Youth U266TY

Sizes: Adult XS-5XL, Youth S-XL

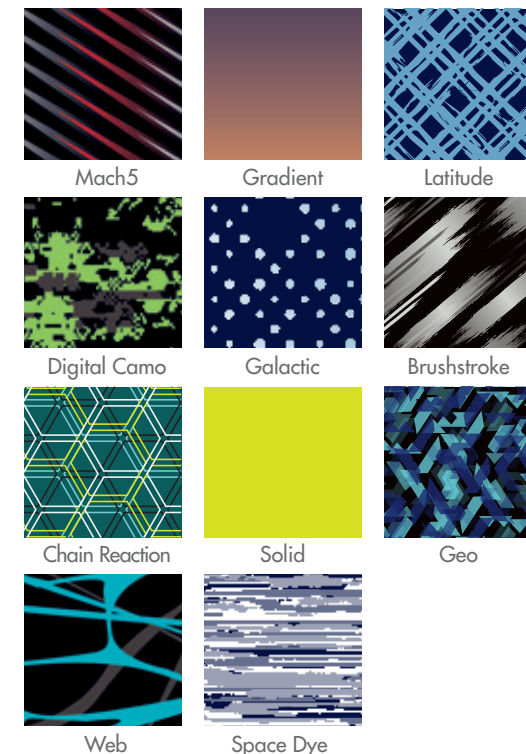
- Performance Fleece (Polyester/Spandex)
- Self-fabric Cuffs And Bottom Band
- Headphone Port In Front Pocket
- Lined Hood
- Made In U.S.A. & Imported

Minimum Quantity 6 On Initial Order. Order Ships Within 5-7 Weeks After Art And Credit Approval. Call Your Sales Rep For Specific Delivery Date. Upcharges: 2XL=\$2, 3XL=\$4, 4XL=\$8, 5XL=\$11

2

PICK YOUR PATTERNS

After choosing your product and design, it's time to pick your patterns. Choose from our eleven options and select which zones you'd like the pattern applied.



3

MAKE IT YOUR OWN WITH COLORS AND ART

After choosing your pattern, customize it with 40 color options. Get inspired by thousands of art design templates or submit your own custom art design.

UNIFORMS

NEW PRODUCT FROM



NEW **UF** Chaos Track Uniform **\$70** PG 54

NEW **RC** RACEDAY UNIFORM **\$32** (Blank)

Singlet Colors: Athletic Navy/White, Athletic Royal/White, Black/White, Maroon/White, Scarlet/White, Team Dark Green/White, White

Short Colors: Athletic Navy/White, Athletic Royal/White, Black/White, Maroon/White, Scarlet/White, Team Dark Green/White

Singlet S16: Men's 40005TU; Ladies' 40005TL

Short S16: Men's 40005BU; Ladies' 40005BL

Singlet Sizes: Men's S-3XL; Ladies' XS-2XL

Short Sizes: Men's S-3XL; Ladies' XS-2XL

- 100% Powerlite Polyester
- Double Dry® Fabric Wicks Moisture Away
- Flatlock Seams To Protect Against Chafing
- Loose Fit
- Imported

Upcharge: 2XL=52, 3XL=54



NEW
2017



NEW **RC** RACEDAY COMPRESSION TANK **\$25** (Blank)

Colors: Athletic Royal/White, Black/White, Scarlet/White, Athletic Navy/White, Maroon/White, Team Dark Green/White, White

Item: Men's 15057TU; Ladies' 15057TL

Sizes: Men's S-2XL; Ladies' XS-2XL

Body: 80% Nylon/20% Spandex; White-79% Polyester/21% Spandex

- Double Dry® Fabric Wicks Moisture Away
- Stretch Fabric For Compression Fit
- Imported

Upcharge: 2XL=52



NEW
2017



NEW **RC** MILEAGE SHORT **\$15** (Blank)

Colors: Black, Athletic Navy

Item: Men's 40006BU; Ladies' 40006BL

Sizes: Men's S-2XL; Ladies' XS-2XL

Body: 100% Polyester Stretch Woven; Piecing-100% Polyester Pindot Mesh; Wicking Liner- 95% Polyester/5% Spandex

- 3" Inseam
- Side Split Run Short
- Stretch Woven
- Imported

Upcharge: 2XL=52



NEW
2017



NEW **RC** MEN'S DOUBLE DRY® 9" COMPRESSION SHORT **\$15** (Blank)

Colors: Black, Athletic Royal, Team Dark Green, Maroon, Scarlet, White

Item: Men's 15031BU

Sizes: Men's S-3XL

Body: 84% Polyester/16% Spandex, Insert-92% Polyester/8% Spandex

- Double Dry® Fabric Wicks Moisture Away From The Body And Helps Control Moisture Buildup
- Compression Fit
- Imported

Upcharge: 2XL=52, 3XL=54



NEW
2017

- Targeted Ventilation Zones For Breathability
- Stretch To Move With You, For Ease Of Movement
- 9" Inseam

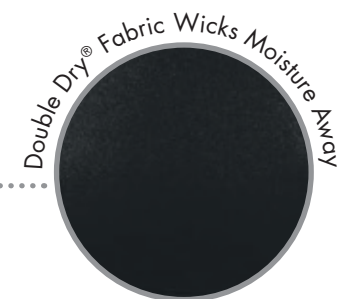


NEW  **WOMEN'S FAST BREAK DOUBLE DRY RACERBACK JERSEY \$30** (Blank)

Colors: Black/White, Dark Green/White, Maroon/White, Navy/White, Royal/White, Scarlet/White, White

Item: Ladies' 15005TL; Girls' 15005TG **Sizes:** Ladies' XS-XL; Girls' M-L

- Body/Sleeve Colors/White-100% Nylon Mock Mesh, Piecing Colors-100% Nylon Open Hole Mesh
- Double Dry® Fabric Wicks Moisture Away
- Women's Athletic Fit
- Imported



NEW  **WOMEN'S 5" DOUBLE DRY® COMPRESSION SHORT \$20** (Blank)

Colors: Athletic Navy, Athletic Royal, Black, Maroon, Scarlet, Team Dark Green

Item: Ladies' 15034BL

Sizes: Ladies' XS-2XL

- Body-84% Polyester/16% Spandex, Insert-92% Polyester/8% Spandex
- Double Dry® Fabric Wicks Moisture Away From The Body And Helps Control Moisture Buildup
- Compression Fit
- Imported

Upcharge: 2XL-52






- Targeted Ventilation Zones For Breathability
- Stretch To Move With You, For Ease Of Movement
- 5" Inseam

A.



RACEDAY PACKAGE:

BLANK ~~\$46~~ **\$44**
WITH ART SHOWN **\$54** Qty 12

- A. **NEW**  Men's Raceday Singlet **\$16** (Blank) PG 49
- B. **NEW**  Men's Mileage Short **\$15** (Blank) PG 49
- C. **NEW**  Vapor® Power Flex 3/4 Tight **\$15** (Blank) PG 32

B.



C.



GM RELIANT UNIFORM \$30 (Blank)

Singlet Colors: Black/White(Y), Navy/White(Y), Royal/White(Y), Red/White(Y), Purple/White(Y), Forest/White(Y), Maroon/White(Y), Black/Gold(Y), Columbia Blue/White(Y), Kelly/White, Cardinal/White, Orange/White(Y)

Short Colors: Black/White(Y), Navy/White(Y), Royal/White(Y), Red/White(Y), Purple/White(Y), Forest/White(Y), Maroon/White(Y), Black/Gold(Y), Columbia Blue/White(Y), Kelly/White, Cardinal/White, Orange/White(Y)

Singlet S15: Men's 0012TU; Ladies' 0012TL; Youth 0012TY **Short S15:** Men's 0012BU; Ladies' 0012BL; Youth 0012BY

Sizes: Men's XS-3XL; Ladies' XS-2XL; Youth S-L

- 100% Polyester Microfilament Interlock With Sport Mesh Polyester Insets
- G2M® Moisture Management
- Modified Racerback
- Imported

Upcharges: 2XL=S2, 3XL=S4 | Youth (Y)



GM DASH SINGLET \$10 (Blank)

Colors: Black, Red, Royal, Navy, Purple, Forest, Maroon

Item: Men's 0016TU; Ladies' 0016TL; Youth 0016TY

Sizes: Men's XS-3XL; Ladies' XS-2XL; Youth S-L

- 100% Polyester Microfilament Interlock
- G2M® Moisture Management
- Imported

Upcharges: 2XL=S2, 3XL=S4



GM 5" DASH SHORT \$10 (Blank)

Colors: Black, Red, Royal, Navy, Purple, Forest, Maroon

Item: Men's 0101BU; Ladies' 0101BL

Sizes: Men's XS-3XL; Ladies' XS-2XL

- 100% Polyester Microfilament Interlock
- 100% Polyester Jersey Knit Modesty Panel (Ladies')
- G2M® Moisture Management
- Imported

Upcharges: 2XL=S2, 3XL=S4



GM 3" DASH SHORT \$10 (Blank)

Colors: Black, Red, Royal, Navy, Purple, Forest, Maroon

Item: Ladies' 0100BL

Sizes: Ladies' XS-2XL

- 100% Polyester Microfilament Interlock
- 100% Polyester Jersey Knit Modesty Panel (Ladies')
- G2M® Moisture Management
- Imported

Upcharges: 2XL=S2



PACKAGE 5-6 ITEMS
10% OFF
SEE BACK COVER FOR DETAILS

FIERCE PACKAGE:
BLANK ~~\$116~~ **\$104**
WITH ART SHOWN **\$110** Qty 12
A. **UF** Fierce Compression Tank **\$40** PG 54
B. **UF** Fierce Compression Short **\$30** PG 54
C. **NEW** **CB** Powerblend® Fleece Crew **\$14** (Blank) PG 41
D. **NEW** **CB** Powerblend® Eco® Pant Without Pockets **\$12** (Blank) PG 43
E. **UF** Eclipse Sling Bag **\$20** PG 59



ULTRAFUSE™ TRACK UNIFORMS

UF TRACK UNIFORMS

Singlet \$40: Men's U001TU; Ladies' U001TL; Youth U001TY
Short \$30: Men's U001BU; Ladies' U001BL; Youth U001BY
Compression Tank \$40: Men's U002TU; Ladies' U002TL; Youth U002TY
Compression Short \$30: Men's U002BU; Ladies' U002BL; Youth U002BY
Standard Sizes: Men's XS-3XL; Ladies' XS-2XL; Youth XS-L
Compression Sizes: Men's XS-3XL; Ladies' XS-2XL; Youth S-L
Inseam: Men's 3", Ladies' 3" (Short); Men's 9", Ladies' 4" (Compression Short)
 Ladies' 7 1/4" (Compression Short)

- 100% Polyester
- G2M® Moisture Management Technology
- Polyester/Spandex (Compression Only)
- Racerback Styling (Ladies' Compression)
- Imported

Minimum Quantity 6 On Initial Order. Order Ships Within 5-7 Weeks After Art And Credit Approval. Call Your Style Consultant For Pricing Under Quantity 12 And Specific Delivery Date. Upcharges: 2XL=\$2, 3XL=\$4



Discounted Team Pricing on UltraFuse™!
 Call 1.877.255.2785 today.



ULTRAFUSE™ MAX TRACK UNIFORMS

Stand out at track meets with customizable uniforms from UltraFuse™ Max. Design your look with ease by pairing the colors and patterns of UltraFuse™ Max to the specific zones of your uniform.



CHOOSE YOUR PRODUCT AND DESIGN

UF MAX TRACK UNIFORMS

Singlet \$40: Men's U001TU; Ladies' U001TL; Youth U001TY
Short \$30: Men's U001BU; Ladies' U001BL; Youth U001BY
Compression Tank \$40: Men's U002TU; Ladies' U002TL; Youth U002TY
Compression Short \$30: Men's U002BU; Ladies' U002BL; Youth U002BY
Standard Sizes: Men's XS-3XL; Ladies' XS-2XL; Youth XS-L
Compression Sizes: Men's XS-3XL; Ladies' XS-2XL; Youth S-L
Inseam: Men's 3", Ladies' 3" (Short); Men's 9", Ladies' 4" (Compression Short)
 Ladies' 7 1/4" (Compression Short)

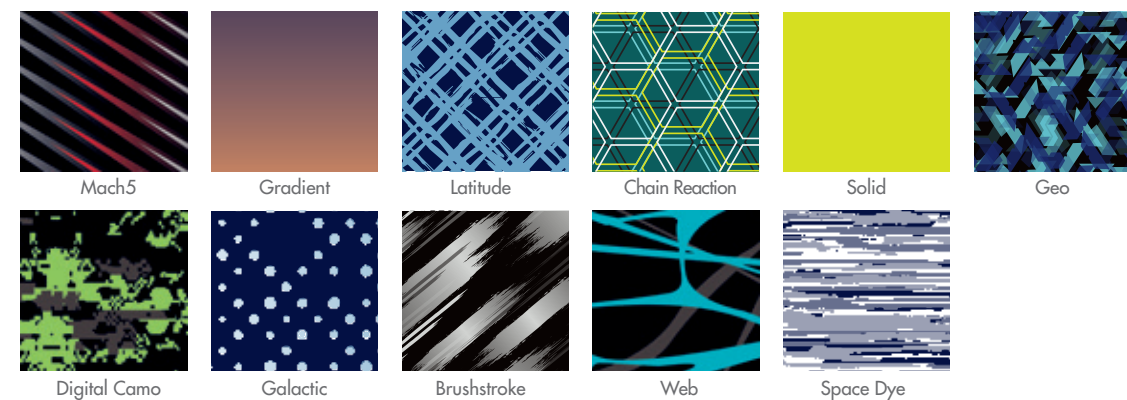
- 100% Polyester
- G2M® Moisture Management Technology
- Polyester/Spandex (Compression Only)
- Racerback Styling (Ladies' Compression)
- Imported

Minimum Quantity 6 On Initial Order. Order Ships Within 5-7 Weeks After Art And Credit Approval. Call Your Style Consultant For Pricing Under Quantity 12 And Specific Delivery Date. Upcharges: 2XL=\$2, 3XL=\$4



PICK YOUR PATTERNS

After choosing your product and design, it's time to pick your patterns. Choose from our eleven options and select which zones you'd like the pattern applied.



MAKE IT YOUR OWN WITH COLORS AND ART

After choosing your pattern, customize it with 40 color options. Get inspired by thousands of art design templates or submit your own custom art design.



CHILL FLEECE HEADBAND \$5 (Blank)

Colors: Black, Navy, Red, Royal, Dark Green, Charcoal

Item: 25600AN

Size: One Size Fits Most

- 100% Polyester Chill Fleece
- Anti-pill Finish
- Machine Washable
- Imported



SPORT-TEK® GLOVES \$5 (Blank)

Colors: Black, Navy, Royal, Red, Purple, Forest, Maroon, Orange, Gold, Texas Orange, Carolina Blue, Pink Raspberry

Item: 25001AN

Size: Small/Medium; Large/X-large

- 100% Acrylic
- Touchscreen-friendly
- Made In U.S.A.



NEW EQUIPMENT DUFFLE WITH WHEEL \$60

Colors: Silver Gray/Black

Item: 50215AN

Size: 44" X 13" X 13"

- Adjustable, Removeable Shoulder Strap
- Full Zipper Side Pocket
- Protective Bottom Runners And Wheels



NEW 2017



- Large Capacity Zipper End Compartment
- Retractable Low Profile Carry Handle
- Imported

SPORT-TEK® SPECTATOR HAT \$10 (Blank)

Colors: Red/Black/White, Purple/Black/White, Royal/Black/White, Forest/Black/White, Maroon/Black/White, Navy/Gold/White, Iron Gray/Black/White, Raspberry/Iron Gray/White, Red/Royal/White

Item: 31306AN

Size: One Size Fits Most

- 100% Acrylic
- Made In U.S.A.



SPORT-TEK® SPECTATOR SCARF \$10 (Blank)

Colors: Navy/White, Royal/White, Red/White, Purple/White, Forest/White, Maroon/White, Black/Gold, Columbia Blue/White, Orange/White, Black/Orange, Black/Gray, Royal/Gold/White, Navy/Gold/White, Red/White/Black, Pink Raspberry/White

Item: 26302AN

Size: 61" Long, 8" Wide

- 100% Acrylic
- Made In U.S.A.



NEW VICTORY DUFFLE \$23 (Blank)

Colors: Red/Black, Royal/Black, Black/Black, Purple/Black, Navy/Black, Graphite/Black

Item: 4022NN

Size: 19.5"x6.25"x15"

- 100% Polyester
- Zippered Front And Side Pocket
- Adjustable And Detachable Shoulder Strap



- Interior Mesh Pocket
- Mesh Side Pocket
- Imported

NEW 2017



KNIT BEANIE \$4 (Blank)

Colors: Black, Navy, Royal, Red, Purple, Maroon, White, Orange, Heather, Gold

Item: Adult 31000AU

Size: One Size Fits Most

- 100% Acrylic
- Imported



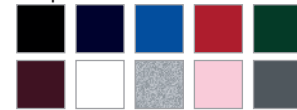
SOLID KNIT SCARF \$8 (Blank)

Colors: Black, Navy, Royal, Red, Forest, Maroon, White, Heather, Pink, Charcoal

Item: 26301AN

Size: 69" Long, 7.25" Wide

- 100% Acrylic
- Imported



SIDELINE DUFFLE BAG \$26 (Blank)

Colors: Black/White, Forest/White, Maroon/White, Navy/White, Purple/White, Red/White, Royal/White

Item: 4007NN

Size: 23"x12"x10.5"

- 100% Polyester Heavyweight 840 Denier Fabric With PVC Coating
- Zippered Side Pocket
- Detachable And Adjustable Padded Shoulder Strap



- Large U-shaped Compartment
- Front Pocket With Mesh Organizer
- Imported



FIND THE RIGHT FIT

Choose The Right Tool For You Based On Your Goals And Needs



Brand and sell exclusive apparel for your team. We'll organize and ship to your buyers.

teamstore.gtmsportswear.com



Handle team orders or fundraisers with ease and convenience. Have your gear shipped directly to you.

coachsassistant.gtmsportswear.com

SMALL TWO-TONE DUFFLE BAG \$21 (Blank)

MEDIUM TWO-TONE DUFFLE BAG \$28 (Blank)

Colors: Black, Navy/Black, Red/Black, Royal/Black

Small: 50209AN

Medium: 50208AN

Size: 11" X 19.75" X 9.75"

Size: 11.75" X 27" X 10"

- 600 Denier Polyester With Polyester Dobby Contrast
- Web Handles With Padded Grips
- Detachable, Adjustable Shoulder Strap
- Exterior Mesh Pocket
- Front Exterior Pocket With Hook And Loop Closure
- Imported



NEW G ELITE BACKPACK \$22 (Blank)
Colors: Red/Black, Royal/Black, Black/Black, Graphite/Black, Navy/Black, Purple/Black
Item: 4021NN
Size: 12" X 6 1/2" X 19"
 • 100% Polyester
 • Two Zippered Main Compartments
 • Mesh Water Bottle Pocket
 • Comfortable, Padded Straps
 • Imported



G HYBRID PACK \$10 (Blank)
Colors: Black/Graphite, Red/Graphite, Royal/Graphite, Navy/Graphite, Blaze Yellow/Graphite, Hot Pink/Graphite, Purple/Graphite
Item: 4020NN
Size: 15 1/4" X 17 1/2"
 • 100% Polyester
 • Imported



G SPIRIT BAG \$15 (Blank)
Colors: Black, Red, Royal, Navy, Maroon, Purple, Dark Green, Orange
Item: 50202AN
Size: 18"x9"x10"
 • 600 Denier Nylon With PVC Coating
 • Zippered Main Compartment With Two Zipper Pulls
 • Matching Web Handles With Self-fabric Handle Wrapper
 • Adjustable And Detachable Matching Shoulder Strap
 • Imported



G SPORT BACKPACK \$26 (Blank)
Colors: Black/White, Red/Black/White, Maroon/Black/White, Royal/Black/White, Navy/Black/White, Purple/Black/White, Forest/Black/White
Item: 4004NN
Size: 10"x12"x18"
 • 100% Heavy Duty Sport Polyester
 • Mesh Ball Compartment
 • Adjustable Shoulder Straps And Hip Belt
 • Headphone Port
 • Imported



NEW 2017



ULTRAFUSE™ BAGS

UF SLING BAG \$20
Item: U400NN **Size:** 19.5" X 14.5"
 • 100% Polyester • Imported
 Minimum Quantity 6 On Initial Order. Order Ships Within 5-7 Weeks After Art And Credit Approval.
 Call Your Style Consultant For Specific Delivery Date



CENTURY



CHAOS



CRUSHER



ECLIPSE

NEW UF BARREL BAG \$25
Item: U401NN **Bag Size:** 20" X 10" **Strap Length:** 25"
 • 100% Polyester • Imported
 Minimum Quantity 6 On Initial Order. Order Ships Within 5-7 Weeks After Art And Credit Approval.
 Call Your Style Consultant For Specific Delivery Date



DYNAMITE



ELECTRIFY



MOTIVATE



OASIS

More designs available!
 Go to gtmtrack.com

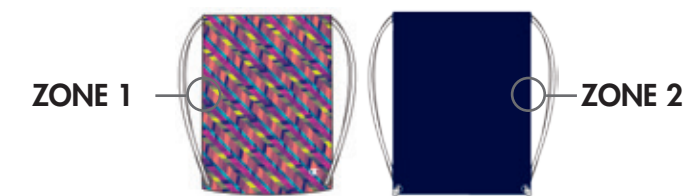
Champion ULTRAFUSE™ MAX BAGS

Complete your head-to-toe look with custom bags from UltraFuse™ Max. Create your look with ease by pairing your favorite bag with the unique colors and patterns of UltraFuse™ Max.

1

CHOOSE YOUR PRODUCT AND DESIGN

UF MAX SLING BAG \$20
Item: U400NN **Size:** 19.5" X 14.5"
 • 100% Polyester • Made In U.S.A. & Imported
 Minimum Quantity 6 On Initial Order. Order Ships Within 5-7 Weeks After Art And Credit Approval.
 Call Your Style Consultant For Specific Delivery Date



2

PICK YOUR PATTERNS

After choosing your product and design, it's time to pick your patterns. Choose from our ten options and select which zones you'd like the pattern applied.



Kaleidoscope



Gradient



Optic



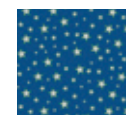
Solid



Rain



Soft Camo



Stellar



Swiss Dot



Color Surge



Snake Print



3

MAKE IT YOUR OWN WITH COLORS AND ART

After choosing your pattern, customize it with 40 color options. Get inspired by thousands of art design templates or submit your own custom art design.



- SCREEN PRINT COLORS
- WHITE
- COOL GRAY 5
- COOL GRAY 11
- BLACK
- DARK BROWN
- GENESIS PURPLE
- SUPER PURPLE
- MAROON
- STRAWBERRY
- BUBBLEGUM PINK
- ANDEAN PINK
- DOLPHIN ORANGE
- NATIONAL RED
- LAVENDER MIST
- TEXAS ORANGE
- LEMON YELLOW
- LIGHT GOLD
- SKY BLUE
- SUPER BRIGHT BLUE
- SUPER ROYAL
- BEARS NAVY
- DEEP AQUA
- TURQUOISE
- BLACK LIGHT GREEN
- KELLY GREEN
- FOREST GREEN
- BRANDYWINE
- BLUE JEWEL
- BLAZE YELLOW
- METALLIC PURPLE
- METALLIC BLACK
- METALLIC SILVER
- METALLIC GOLD
- METALLIC ROYAL
- METALLIC GREEN
- FL. RED
- FL. MAGENTA
- FL. PINK
- FL. YELLOW
- ATOMIC GREEN
- FUCHSIA
- CITRUS
- HOT CORAL
- SEA GREEN
- JUNGLE GREEN

SCREEN PRINT

SMALL DESIGNS

Recommended Placements: Left/Right Chest, Left Leg, Back Neck

T16-LC5 One-color	T15-TR1 Two-color	T16-LG02 One-color	
T17-LC6 One-color	T13-LC1 Two-color	T15-LC3 Two-color	T17-LC5 Two-color

QTY	7-11	12-23	24-35	36-71	72+
One-color	\$7	\$4.50	\$2	\$1.50	\$0.50
Two-color	\$9	\$5.50	\$3	\$2	\$0.75
Three-Color	\$11	\$7	\$4	\$2.50	\$1.25
Four-Color	\$13	\$8.50	\$5	\$3	\$1.75

VERTICAL SCREEN PRINT

Recommended Placements: Vertical Center Back, Vertical Left Chest, Full Back, Left Leg Thigh

T16-CH104 Two-color	T16-TR5 Two-color	T14-CH35 One-color	T14-CH88 Two-color	T15-SP3 Two-color

QTY	7-11	12-23	24-35	36-71	72+
One-color	\$7	\$4.50	\$2	\$1.50	\$0.50
Two-color	\$9	\$5.50	\$3	\$2	\$0.75
Three-Color	\$11	\$7	\$4	\$2.50	\$1.25
Four-Color	\$13	\$8.50	\$5	\$3	\$1.75

LARGE DESIGNS

Recommended Placements: Full Front, Full Back

T16-TR4 Two-color	T17-BD4 Two-color	T17-BT1 Two-color
	T17-BT4 Two-color	T17-SP4 Two-color

QTY	7-11	12-23	24-35	36-71	72+
One-color	\$7	\$4.50	\$2	\$1.50	\$0.50
Two-color	\$9	\$5.50	\$3	\$2	\$0.75
Three-Color	\$11	\$7	\$4	\$2.50	\$1.25
Four-Color	\$13	\$8.50	\$5	\$3	\$1.75

SPORT GRIP

MEGA LEG DESIGNS

Recommended Placements: Mega Left/Right Leg

T12-MEGA10 One-color	T11-MEGA1 One-color	T14-MEGA4 One-color	T12-MEGA18 One-color	T13-MEGA7 One-color

QTY	7-11	12-23	24-35	36-71	72+
Sport Grip	\$14.50	\$12.50	\$12	\$11	\$10.75
Fashion Film	\$17	\$15	\$14.50	\$13.50	\$13.25
Premium Glitter	\$23	\$21	\$20.50	\$19.50	\$19.25

SMALL SPORT GRIP DESIGNS

Recommended Placements: Left/Right Leg, Left Chest, Back Neck

T14-SGLG1 Two-color	T17-SGLG02 One-color	T17-SGLG03 One-color	T12-SG13 Two-color	T15-SGLG3 One-color

QTY	1	2-6	7-11	12-23	24-35	36-71	72+
One-layer	\$23.50	\$9.50	\$6.50	\$4.50	\$4	\$3	\$2.75
Two-layer	\$25	\$11	\$8	\$6	\$5.50	\$4.50	\$4.25

LARGE SPORT GRIP DESIGNS

Recommended Placements: Full Front, Full Back

T17-SGSP7 Two-color	T15-SGTR1 Two-color	T17-SGSP16 Two-color	T17-SGSP18 Two-color	T14-SG3 Two-color

QTY	1	2-6	7-11	12-23	24-35	36-71	72+
One-layer	\$23.50	\$9.50	\$6.50	\$4.50	\$4	\$3	\$2.75
Two-layer	\$25	\$11	\$8	\$6	\$5.50	\$4.50	\$4.25

MULTI-PROCESS HEAT TRANSFER DESIGNS

Recommended Placements: Full Front, Full Back

T17-MXCH2 Two-color	T17-MXCH4 Two-color	T17-MXCH7 Two-color	T17-MXSP1 Two-color	T15-FFCH12 Two-color

QTY	1	2-6	7-11	12-23	24-35	36-71	72+
Two-layer	\$31	\$17	\$14	\$12	\$11.50	\$10.50	\$10.25

- SPORT GRIP COLORS
- KANSAS RED
- BLACK
- FOREST
- GOLD
- COOL GRAY 5
- MAROON
- BEARS NAVY
- BRIGHT ORANGE
- SUPER PURPLE
- SUPER ROYAL
- WHITE
- KELLY GREEN
- COLUMBIA BLUE
- BRICK RED
- LEMON YELLOW

THREAD COLORS




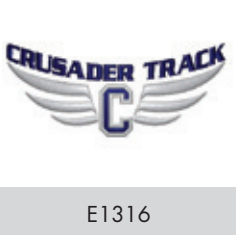
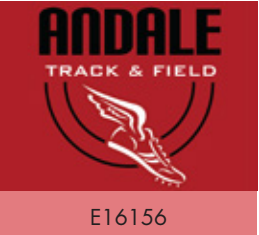
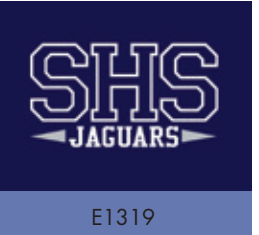


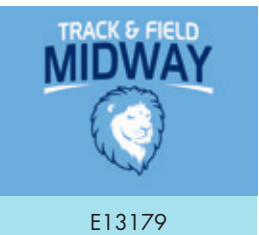
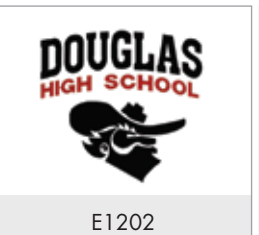
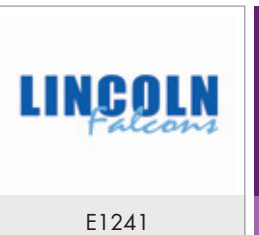
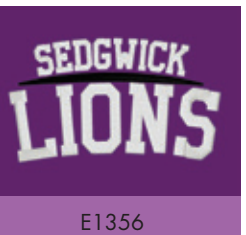
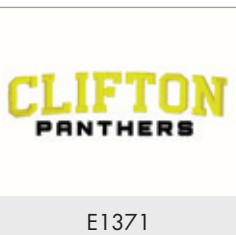
- WHITE 0010
- BLACK 0200
- CHARCOAL 0111
- GRAY 0131
- GOLD 0702
- TAN 0761
- ANTIQUÉ GOLD 0851
- CREAM 0870
- BROWN 1055
- RED 1902
- DARK RED 1912
- MAROON 2115
- HOT PINK 2520
- WILD PINK 2550
- LILAC 2920
- PURPLE 3110
- NAVY 3355
- ROYAL 3611
- COLUMBIA BLUE 3810
- BRIGHT BLUE 3900
- SILVER 3971
- SURF BLUE 4421
- FOREST 5326
- EXTREME TURQUOISE 4113
- BURNT ORANGE 1332
- KELLY 5422
- NEON YELLOW 6010
- NEON GREEN 5500
- M. SILVER RH105N-1
- M. GOLD RH1105-4
- M. BLUE RH1105N-4
- ATOMIC GREEN 6031
- FUCHSIA 2300

EMBROIDERY

SMALL EMBROIDERY DESIGNS

Recommended Placements: Left Chest, Left Leg, Back Neck


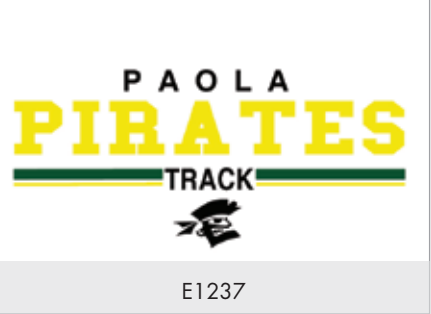
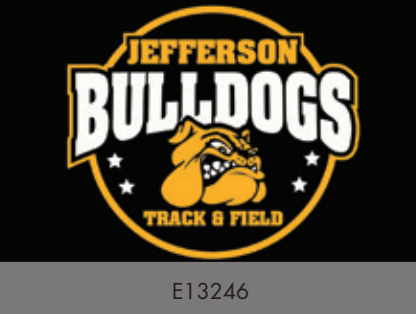
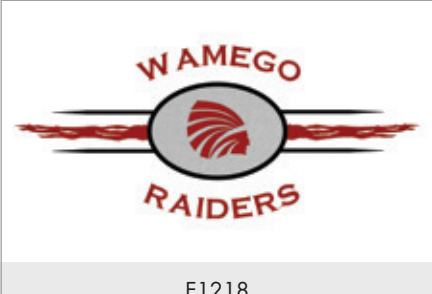
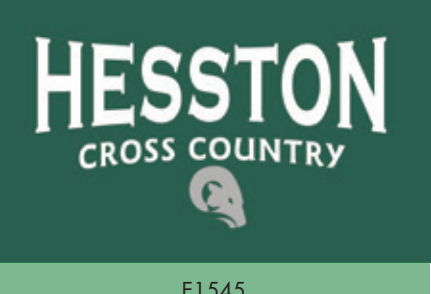

QTY	1	2-6	7-11	12-23	24-35	36-71	72+
	\$25	\$13	\$9	\$6	\$6	\$5.50	\$5.25

 E1750	 E1760	 E16113	 E1316
 E16156	 E1319	 E0617	 E1011
 E13179	 E1202	 E1241	 E1356
			 E1371

LARGE EMBROIDERY DESIGNS

Recommended Placements: Full Front, Full Back

QTY	1	2-6	7-11	12-23	24-35	36-71	72+
	\$33	\$21	\$17	\$14	\$14	\$13.50	\$13.25

 E1469	 E1237	 E13246
 E1218	 E1545	 E0869

FIND THE RIGHT FIT

Choose the right tool for you based on your goals and needs



Brand and sell exclusive apparel for your team. We'll organize and ship to your buyers.

teamstore.gtmsportswear.com



Handle team orders or fundraisers with ease and convenience. Have your gear shipped directly to you.

coachsassistant.gtmsportswear.com

GET SET UP

- Easily create your online store for **FREE**
- Choose the art and apparel you want for **YOUR** store



SIT BACK & RELAX

- We'll organize and ship to you (Coach's Assistant) or your buyers (TeamStore) so you can avoid the hassle
- Enjoy a stress-free way to outfit your team, parents, and fans



EASY SET UP
Easily set up your store online for **FREE!**



PRODUCT
Choose the products you want to sell.



SELL
We handle the orders, you keep the profit!

ATTENTION: COACH OR ATHLETIC DIRECTOR

SOURCE CODE

DMML-TRX-201710

CUSTOMER NUMBER



CALL
1.877.255.2785
TO CREATE YOUR
CUSTOM PACKAGE.

Offer ends 12/31/2017

Items less than \$5 and outlet items are not eligible.

A minimum of 6 packages are required to receive discount pricing

1.877.255.2785 | service@gtmsportswear.com | gtmtrack.com | Mon - Fri 7AM - 6PM CT Sat 8AM - 1PM CT

Pricing subject to change without notice.

All orders are subject to GTM's Terms and Conditions located at www.gtmsportswear.com/termsandconditions